

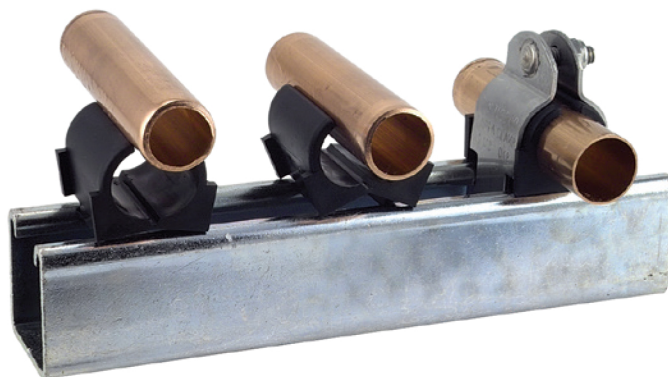
## Cush-A-Clamp®



Gold Electro-Galvanized Steel



Stainless Steel



The "Living Hinge" allows the cushion to be spread apart for quick, easy installation.

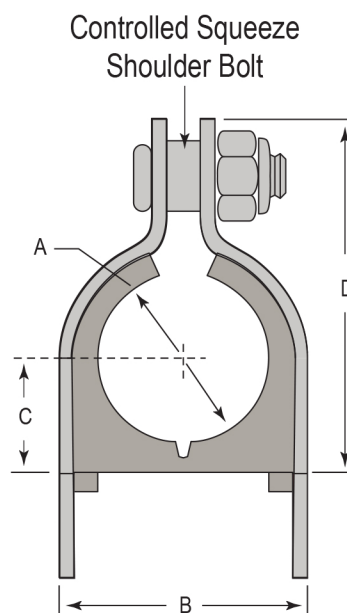
**CUSH-A-CLAMP®** — Channel mounted clamping systems are ideal for multiple line runs, while absorbing shock and vibration, reducing unwanted noise and preventing galvanic corrosion. Cush-A-Clamp® fits any standard 1-5/8" wide channel.

Assembly consisting of steel clamp with locknut and thermoplastic elastomer cushion. All parts are marked for easy identification and packaged for small lot or bulk use. When specified, Cush-A-Clamp® assemblies up to 2", are available individually packaged.

**THE CLAMP** — Features a unique shoulder stud which is securely fastened to one clamp half. Steel clamps for tube sizes up to 1-3/8" have the "Controlled Squeeze™" design which eliminates over-tightening and rotation while a nylon-insert nut assures a positive lock. Clamps are available in steel (with electro-dichromate finish), and stainless steel type 304. (Contact factory for type 316).

**THE CUSHION** — Made from a thermoplastic elastomer, it's built tough to withstand the effects of most oils, chemicals and industrial cleaning compounds, in temperatures from -50°F to 275°F. Interlock edges and channel locator legs ensure that the cushion remains in place.

**INSTALLATION** — One man, one tool time savings. Retrofits can be added without disassembly. The "Living Hinge" allows the cushion to be spread apart for quick, easy installation on sizes from 1/4" through 1-3/4".



Loading Values Mounted in Standard 12 Gage Channel.

Nut	Torque (in-lbs)	Products	Pullout (lbs)	Slip (lbs)	
				Along	Through
1/4"	40	DSA004T008 - DSA022T026	1,000	100	100
5/16"	60	DSA024T028 - DSA050N056	2,200	200	200
3/8"	150	DSA053N050 - DSA106N114	3,600	600	350

Loads are the same for Stainless Steel Clamps (Example 024NS028)

### PROJECT INFORMATION:

Project:

Date:

Phone:

Architect / Engineer:

Contractor:

Address:

Notes 1:

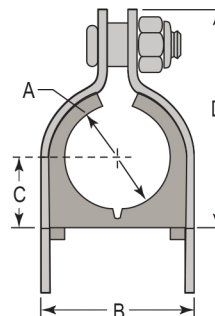
### APPROVAL STAMP:



Gold Electro-Galvanized Steel



Stainless Steel



Steel Part No.	Stainless Steel Part No.	Dimension "A"			Dimensions (inches)			
		*Copper and Steel Tubing	Copper Water Pipe (Nom.)	Nom. Pipe Size	A	B	C	D
DSA004T008	DSA004NS008	1/4"	-	-	0.25" (6mm)	0.62" (16mm)	0.27" (7mm)	0.98" (25mm)
DSA006T010	DSA006NS010	3/8"	1/4"	-	0.37" (9mm)	0.82" (21mm)	0.33" (8mm)	1.13" (29mm)
DSA008T012	DSA008NS012	1/2"	3/8"	-	0.50" (13mm)	0.94" (24mm)	0.40" (10mm)	1.34" (34mm)
DSA009N012	DSA009NS012	-	-	1/4"	0.54" (14mm)	0.98" (25mm)	0.43" (11mm)	1.34" (34mm)
DSA010T014	DSA010NS014	5/8"	1/2"	-	0.62" (16mm)	1.06" (27mm)	0.46" (12mm)	1.54" (39mm)
DSA011N014	DSA011NS014	-	-	3/8"	0.67" (17mm)	1.13" (29mm)	0.49" (12mm)	1.54" (39mm)
DSA012T016	DSA012NS016	3/4"	5/8"	-	0.75" (19mm)	1.20" (30mm)	0.52" (13mm)	1.68" (43mm)
DSA014N018	DSA014NS018	-	-	1/2"	0.84" (21mm)	1.29" (33mm)	0.58" (15mm)	1.82" (46mm)
DSA014T018	DSA014NS018	7/8"	3/4"	-	0.87" (22mm)	1.31" (33mm)	0.58" (15mm)	1.82" (46mm)
DSA016T020	DSA016NS020	1"	-	-	1.00" (25mm)	1.44" (37mm)	0.65" (17mm)	1.95" (50mm)
DSA017N022	DSA017NS022	-	-	3/4"	1.05" (27mm)	1.57" (40mm)	0.70" (18mm)	2.08" (53mm)
DSA018T022	DSA018NS022	1-1/8"	1"	-	1.12" (28mm)	1.57" (40mm)	0.70" (18mm)	2.08" (53mm)
DSA020T024	DSA020NS024	1-1/4"	-	-	1.25" (32mm)	1.70" (43mm)	0.77" (20mm)	2.21" (56mm)
DSA021N026	DSA021NS026	-	-	1"	1.31" (33mm)	1.76" (45mm)	0.81" (21mm)	2.34" (59mm)
DSA022T026	DSA022NS026	1-3/8"	1-1/4"	-	1.37" (35mm)	1.82" (46mm)	0.83" (21mm)	2.34" (59mm)
DSA024N028	DSA024NS028	1-1/2"	-	-	1.50" (38mm)	1.95" (50mm)	0.90" (23mm)	2.47" (63mm)
DSA026N030	DSA026NS030	1-5/8"	1-1/2"	-	1.62" (41mm)	2.07" (53mm)	0.96" (24mm)	2.60" (66mm)
DSA027N032	DSA027NS032	-	-	1-1/4"	1.66" (42mm)	2.17" (55mm)	0.99" (25mm)	2.73" (69mm)
DSA028N032	DSA028NS032	1-3/4"	-	-	1.75" (44mm)	2.2" (56mm)	1.02" (26mm)	2.73" (69mm)
DSA030N034	DSA030NS034	1-7/8"	-	1-1/2"	1.90" (48mm)	2.32" (59mm)	1.09" (28mm)	2.86" (73mm)
DSA032N036	DSA032NS036	2"	-	-	2.00" (51mm)	2.45" (62mm)	1.15" (29mm)	3.04" (77mm)
DSA034N040	DSA034NS040	2-1/8"	2"	-	2.12" (54mm)	2.57" (65mm)	1.27" (32mm)	3.23" (82mm)
DSA038N042	DSA038NS042	2-1/4"	-	-	2.37" (60mm)	2.82" (72mm)	1.41" (36mm)	3.67" (93mm)
DSA038N044	DSA038NS044	2-3/8"	-	2"	2.37" (60mm)	2.82" (72mm)	1.41" (36mm)	3.67" (93mm)
DSA040N046	DSA040NS046	2-1/2"	-	-	2.50" (64mm)	2.94" (75mm)	1.46" (37mm)	3.79" (96mm)
DSA042N048	DSA042NS048	2-5/8"	2-1/2"	-	2.62" (67mm)	3.07" (78mm)	1.53" (39mm)	3.92" (100mm)
DSA046N052	DSA046NS052	2-7/8"	-	2-1/2"	2.87" (73mm)	3.32" (84mm)	1.66" (42mm)	4.17" (106mm)
DSA050N054	DSA050NS054	3"	-	-	3.00" (76mm)	3.57" (91mm)	1.78" (45mm)	4.42" (112mm)
DSA050N056	DSA050NS056	3-1/8"	3"	-	3.12" (79mm)	3.57" (91mm)	1.78" (45mm)	4.42" (112mm)
DSA053N060	DSA053NS060	3-5/16"	-	-	3.31" (84mm)	3.96" (101mm)	1.90" (48mm)	4.75" (121mm)
DSA056N062	DSA056NS062	3-1/2"	-	3"	3.50" (89mm)	3.95" (100mm)	1.97" (50mm)	4.79" (122mm)
DSA058N064	DSA058NS064	3-5/8"	3-1/2"	-	3.62" (92mm)	4.20" (107mm)	2.03" (52mm)	5.11" (130mm)
DSA064N072	DSA064NS072	4"	-	3-1/2"	4.00" (102mm)	4.45" (113mm)	2.28" (58mm)	5.11" (130mm)
DSA066N074	DSA066NS074	4-1/8"	4"	-	4.12" (105mm)	4.57" (116mm)	2.34" (59mm)	5.54" (141mm)
DSA069N076	DSA069NS076	4-5/16"	-	-	4.34" (110mm)	4.96" (126mm)	2.40" (61mm)	5.84" (148mm)
DSA072N080	DSA072NS080	4-1/2"	-	4"	4.50" (114mm)	4.95" (126mm)	2.53" (64mm)	5.92" (150mm)
DSA082N090	DSA082NS090	5-1/8"	5"	-	5.12" (130mm)	5.57" (141mm)	2.84" (72mm)	6.54" (166mm)
DSA089N096	DSA089NS096	-	-	5"	5.56" (141mm)	6.01" (153mm)	3.06" (78mm)	6.92" (176mm)
DSA096N106	DSA096NS106	6"	-	-	6.00" (152mm)	6.57" (167mm)	3.34" (85mm)	7.54" (192mm)
DSA098N106	DSA098NS106	6-1/8"	6"	-	6.12" (155mm)	6.57" (167mm)	3.34" (85mm)	7.54" (192mm)
DSA106N114	DSA106NS114	-	-	6"	6.62" (168mm)	7.07" (180mm)	3.59" (91mm)	8.23" (209mm)

\*Tube O.D. is Cushion I.D. ; Design load deflection data available on request.